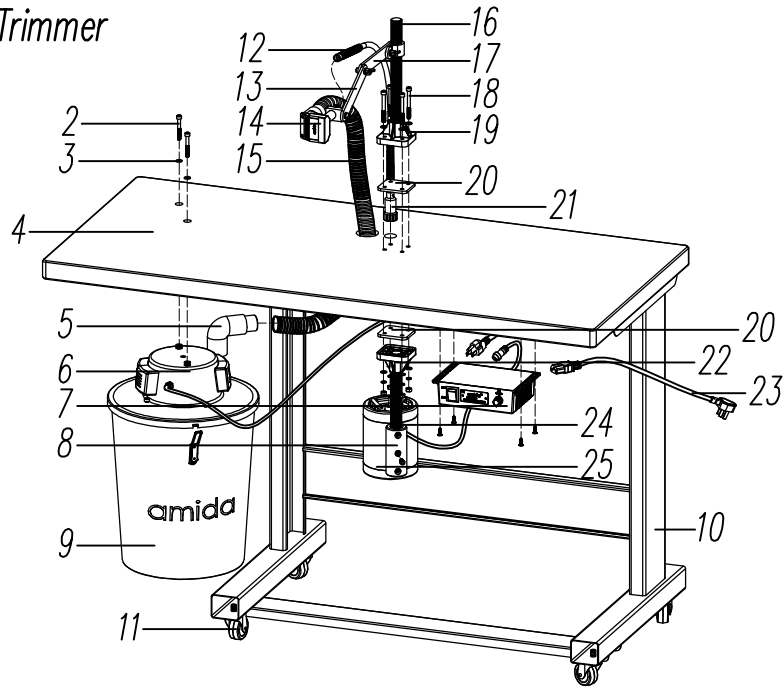


FT100 固定刀头式剪线机  
Fixed Style Thread Trimmer

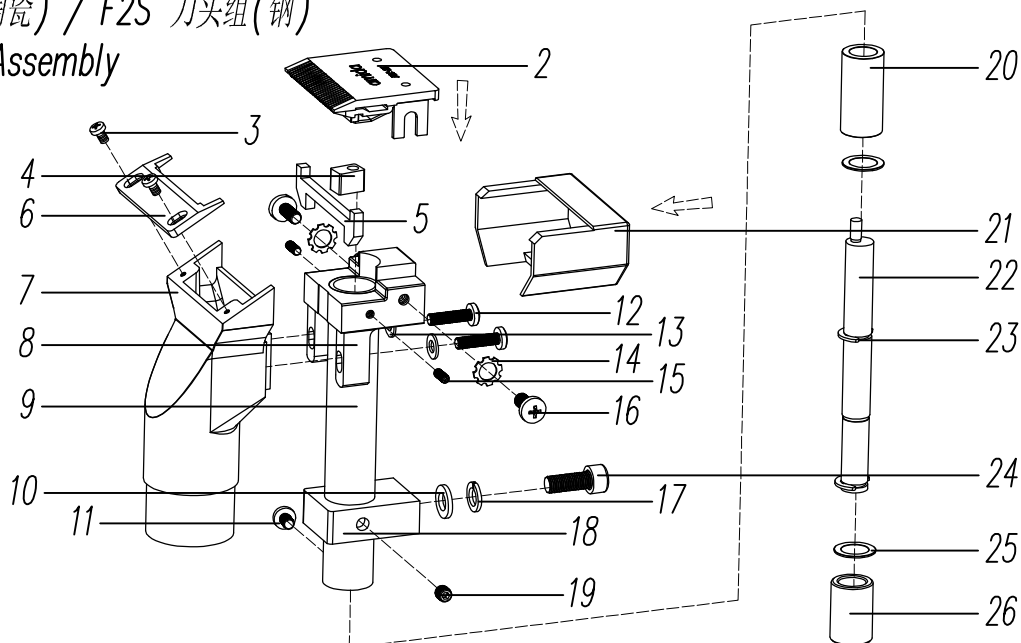


(AC220V 50Hz/60Hz)

REF. NO.	PART NO.	品名	DESCRIPTION	QTY
1	FT100	固定刀头式剪线机	Fixed Style Thread Trimmer	1
2	CHS645	内六角螺丝/M6×45	Screw	2
3	PW6	平垫片/Φ6×Φ12×1	Plain Washer	2
4	TS-2	台板	Table	1
5	S60-06	弯管接头(90°)	90° Elbow	1
6	SG100M	吸风马达组	Suction System Assembly	1
7	EC100	电控组	PCB Control Box	1
8	C80-02	剪线电机固定套	Holder	1
9	S60-03	集尘桶	Plastic Container	1
10	TS-1	机架	Stand	1
11	SS-103	脚轮/M10×15	Castor Wheel	4
12	F600	软轴	Flexible Shaft	1
13	C82-03	直形支撑片	Holder	1
14	F2C/F2S	刀头组	Blade Head Assembly	1
15	H800	软管/Φ32×800	Hose	1
16	C82-01	花纹支撑棒	Holder	1
17	C82-02	圆形支撑片	Holder	1
18	CHS675	内六角螺丝/M6×75	Screw	4
19	C80-03	法兰座	Flange	1
20	C80-10	法兰座胶垫	Rubber Mat	2
21	SS-100	螺母固定套	Fitting	1
22	C80-03S	法兰座	Flange	1
23	E3-2500	电源线/3×0.75mm <sup>2</sup> ×2500mm	Wire	1
24	C80-04	吊棒	Holder	1
25	C80-01M	剪线电机	Clipper Motor	1

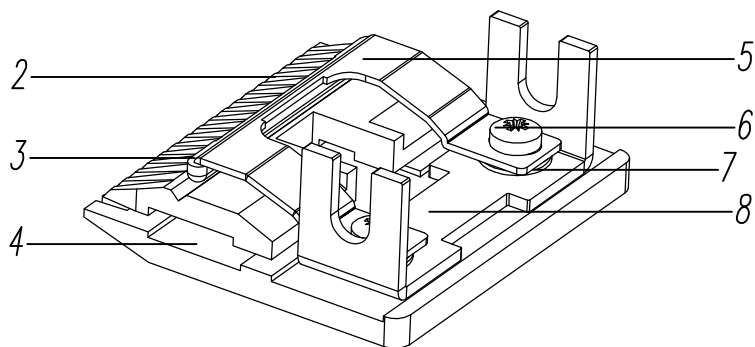
# F2C 刀头组(陶瓷) / F2S 刀头组(钢)

## Blade Head Assembly



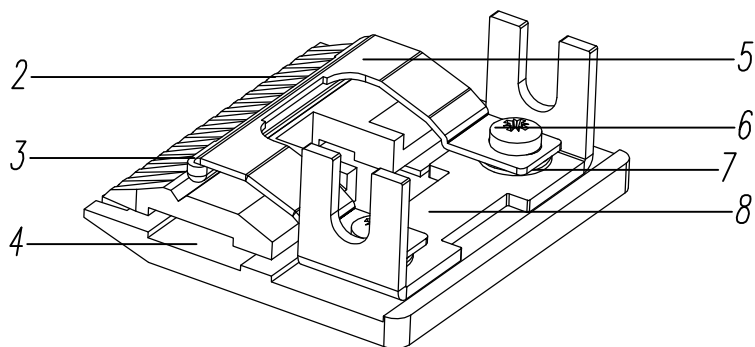
REF. NO.	PART NO.	品名	DESCRIPTION	QTY
1	F2C/F2S	刀头组	Blade Head Assembly	1
2	F2C-25U/F2C-25V/F2S-25V	刀片组	Clipper Blade	1
3	R1-35	圆头十字螺丝/M3×5	Screw	2
4	F2SE	滑块	Sliding Piece	1
5	F2-01G	羊毛毡	Sealing Ring	1
6	F2-01E	挡风片	Suction Guard	1
7	F2-01B	吸风异形管	Vacuum Tube	1
8	F2-01A	刀头固定座	Supporting Rack	1
9	C80-05	刀头支撑管	Supporting Tube	1
10	PW6	平垫片/φ6×φ12×1	Plain Washer	1
11	R1-46	圆头十字螺丝/M4×6	Screw	1
12	SS-105	复合槽螺丝/M4×16(镀镍)	Screw	2
13	PW4	平垫片/φ4×φ8×0.5	Plain Washer	2
14	ETW5	止退垫片/φ5×φ10×0.8(外齿)	Washer	2
15	HS38	内六角紧定螺丝/M3×8(不锈钢)	Screw	2
16	R1-510	圆头十字螺丝/M5×10	Screw	2
17	SW6	弹簧垫片/φ6×φ10×1.7	Spring Washer	1
18	F2-01D	刀头连接块	Connecting Plate	1
19	HS55	内六角紧定螺丝/M5×5(发黑)	Screw	1
20	C80-06	长含油轴承	Bearing	1
21	F2-01F	刀头套	Cover	1
22	C80-08	偏心轴	Eccentric Shaft	1
23	SS-101	卡簧	Clamp Spring	2
24	CHS616	内六角螺丝/M6×16	Screw	1
25	SS-102	偏心轴垫圈	Washer	2
26	C80-07	短含油轴承	Bearing	1

F2S-25V 刀片组(钢)  
Clipper Blade



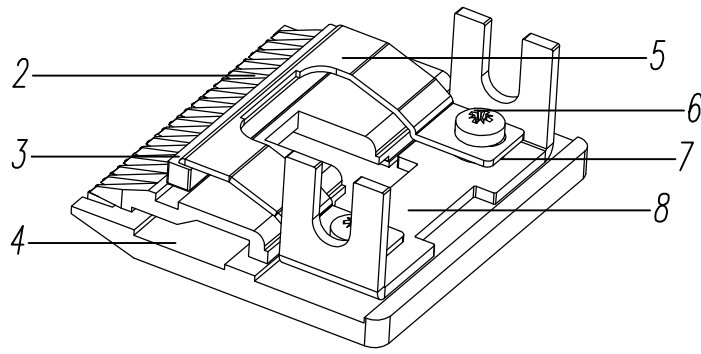
REF. NO.	PART NO.	品名	DESCRIPTION	QTY
1	F2S-25V	刀片组	Clipper Blade	1
2	F2-MSV	钢动刀片(V型槽)	Movable Blade	1
3	C80-09V	胶棒(V型)	Spring Cover	1
4	F2-U	定刀片	Fixed Blade	1
5	F2SG	弹簧片	Spring Piece	1
6	SS-106	复合槽螺丝/M4×5(发黑)	Screw	2
7	PW4	平垫片/φ4×φ8×0.5	Plain Washer	2
8	F2ST	支架	Support	1

F2C-25V 刀片组(陶瓷)  
Clipper Blade



REF. NO.	PART NO.	品名	DESCRIPTION	QTY
1	F2C-25V	刀片组	Clipper Blade	1
2	M7-MCV	陶瓷动刀片(V型槽)	Movable Blade	1
3	C80-09V	胶棒(V型)	Spring Cover	1
4	F2-U	定刀片	Fixed Blade	1
5	F2SG	弹簧片	Spring Piece	1
6	SS-106	复合槽螺丝/M4×5(发黑)	Screw	2
7	PW4	平垫片/φ4×φ8×0.5	Plain Washer	2
8	F2ST	支架	Support	1

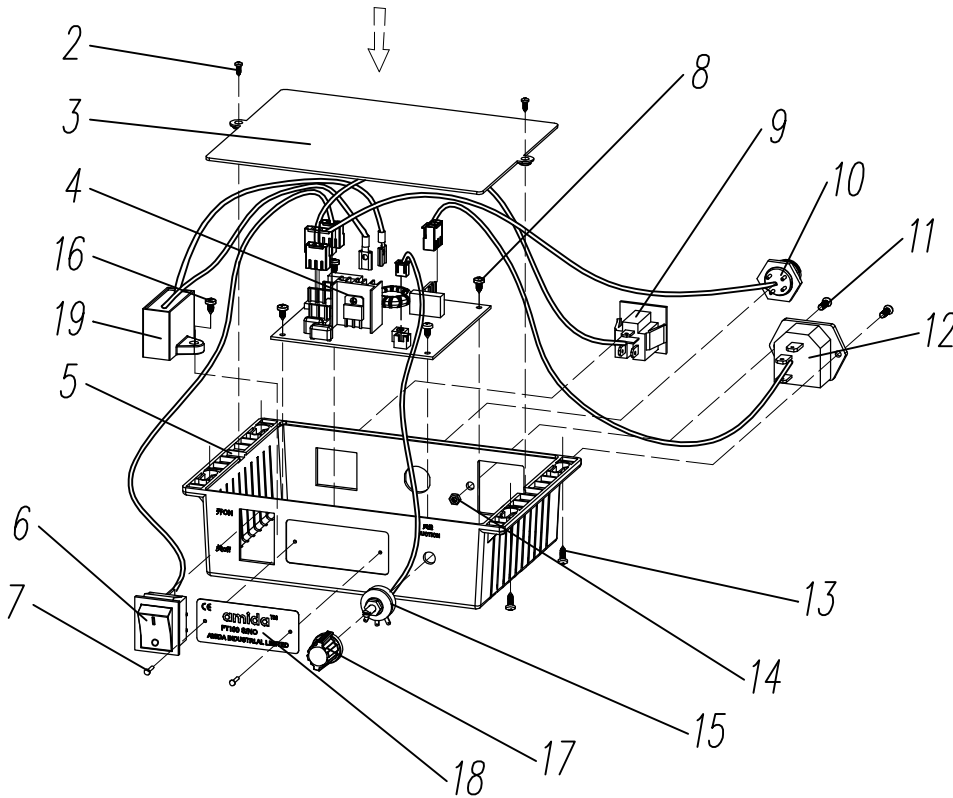
F2C-25U 刀片组(陶瓷)  
Clipper Blade



REF. NO.	PART NO.	品名	DESCRIPTION	QTY
1	F2C-25U	刀片组	Clipper Blade	1
2	F2-MCU	陶瓷动刀片(U型槽)	Movable Blade	1
3	C80-09U	胶棒(U型)	Spring Cover	1
4	F2-U	定刀片	Fixed Blade	1
5	F2SG	弹簧片	Spring Piece	1
6	SS-106	复合槽螺丝/M4×5(发黑)	Screw	2
7	PW4	平垫片/φ4×φ8×0.5	Plain Washer	2
8	F2ST	支架	Support	1

EC100 电控组  
PCB Control Box

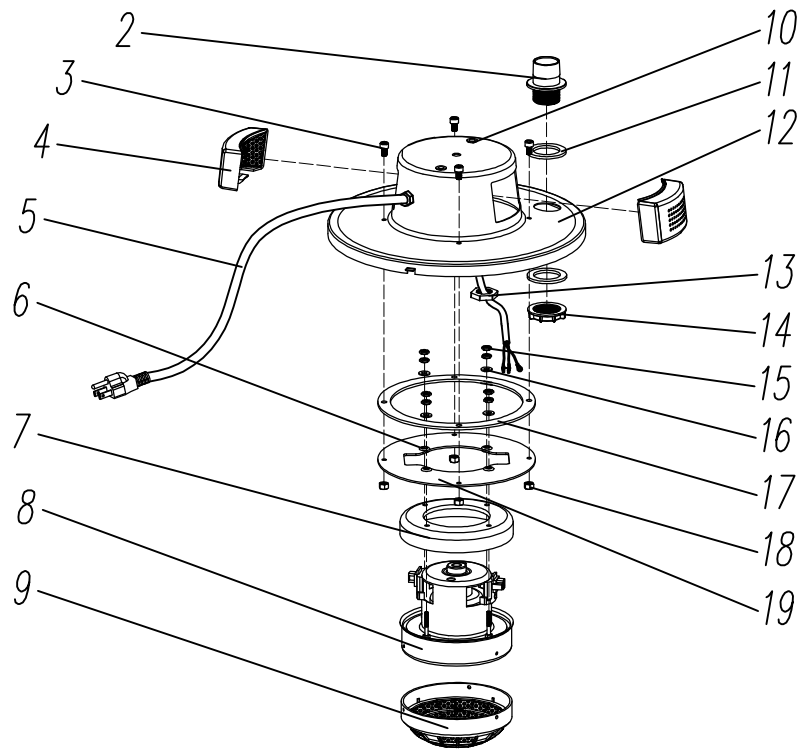
剪线机配普通吸风马达专用  
For Thread Trimmer With Suction Motor



- 6: SWITCH  
9: MOTOR1  
10: MOTOR2  
12: 220V AC  
15: VR1  
L: 火线 (红色) 3  
N: 零线 (黑色) 2  
E: 地线 (黄绿色) 1  
C: 电容启动 (白色) 4

REF. NO.	PART NO.	品名	DESCRIPTION	QTY
1	EC100	电控组	PCB Control Box	1
2	RTS1-2.68	十字圆头自攻螺钉/M2.6×8	Screw	2
3	E80-01B	控制盒盖	Cover	1
4	E80-02	线路板	Circuit Board	1
5	E80-01A	控制盒	Control Box	1
6	E80-05	船形开关	Switch	1
7	R1.86	铆钉/M1.8×6	Rivet	2
8	RTS1-38	十字圆头自攻螺钉/M3×8	Screw	3
9	E80-06P	美式电源插座	Socket	1
10	GX16-4P	航空插头/16-4芯	Plug	1
11	CB1-310	十字沉头螺丝/M3×10	Screw	2
12	E80-04P	品字电源插座(带5A保险管)	Socket	1
13	CTS1-416	十字沉头自攻螺钉/M4×16	Screw	4
14	HN3	外六角螺母/M3	Nut	2
15	E80-07A	电位器	Potentiometer	1
16	CTS1-310	十字沉头自攻螺钉/M3×10	Screw	1
17	E80-07B	电位器旋钮	Knob	1
18	P100	铭牌	Nameplate	1
19	E80-03	电容	Capacitor	1

SG100M 吸风马达组  
Suction System Assembly



REF. NO.	PART NO.	品名	DESCRIPTION	QTY
1	SG100M	吸风马达组	Suction System Assembly	1
2	S60-07A	法兰接头	Flange Joint	1
3	CHS610	内六角螺丝/M6×10	Screw	4
4	S60-05	出风口	Air Outlet	2
5	E3-800	美式电源线/3×0.75mm <sup>2</sup> ×800mm	Wire	1
6	S60-08N2	护线圈	Protective Ring	4
7	S60-09	马达胶垫	Rubber MAT	1
8	S60-01M	吸风马达	Suction Motor	1
9	S60-04	防尘罩	Filter	1
10	RN6	拉铆螺母/M6	Nut	2
11	S60-07N	法兰接头密封垫	Seal Ring	2
12	S60-02	桶盖(单孔)	Container Cover	1
13	E80-10	电缆螺旋接头/PG7	Connector	1
14	S60-07B	法兰接头螺母	Nut	1
15	HN4	外六角螺母/M4	Nut	8
16	PW48	平垫片/φ4×φ8×0.8	Plain Washer	4
17	S60-08N1	法兰盘垫圈	Seal Ring	1
18	HN6	外六角螺母/M6	Nut	4
19	S60-08	法兰盘	Flange	1